

**WHEN EVERY ANSWER
COUNTS...**

STARGEL™₁₀



STARGEL™₁₀ SYSTEM

MAXIMUM PERFORMANCE FOR YOUR BLOOD BANK LABORATORY

5 MINUTE INCUBATION & MONITORING OF INDIVIDUAL CARDS



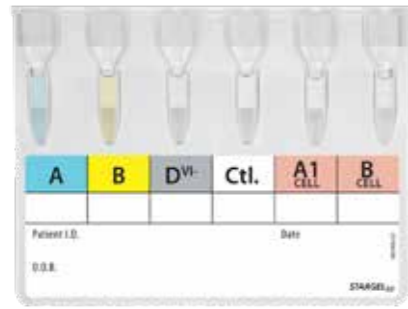
SATELLITE READER

- Android tablet functionality
- Interfaceable to LIS
- Connectivity to centrifuge & incubator
- High resolution colour card imaging
- Password security/user access levels
- Database backup and restore options
- Comprehensive Quality Control module

5 MINUTE CENTRIFUGATION FOR ALL GEL TESTS INCLUDING FORWARD & REVERSE GROUP AND 3 CELL SCREEN

Developed with

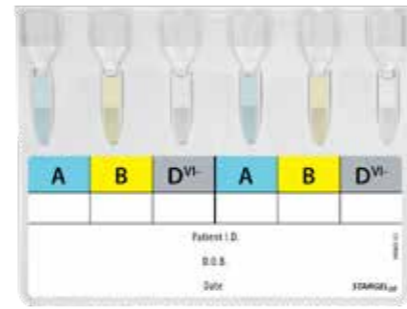
automobili
Lamborghini



STARGEL10 ABO/D + Reverse (Patient)

For ABO Forward and Reverse Grouping in Patients.

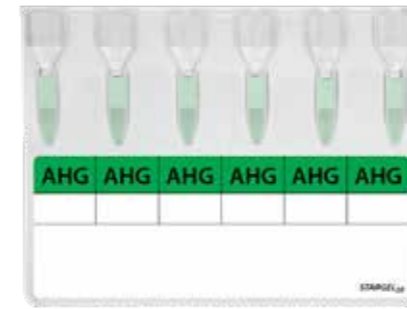
A | B | D^{VI-} | Ctl. | A1 cell | B cell



STARGEL10 Group Check (Patient)

For ABO and D Group Check on Patients (Anti-D does not detect D^{VI}).

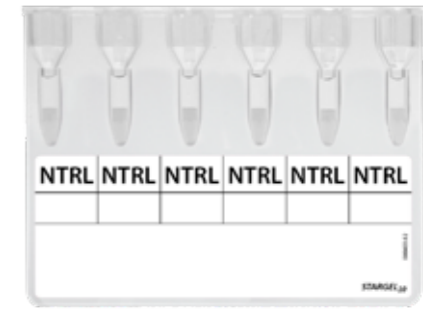
A | B | D^{VI-} | A | B | D^{VI-}



STARGEL10 AHG

For direct and indirect antiglobulin testing.

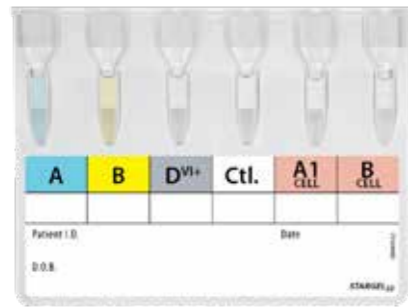
AHG | AHG | AHG | AHG | AHG | AHG



STARGEL10 Neutral

For Reverse Grouping, cold agglutinin testing and antigen typing with monoclonal IgM antibodies.

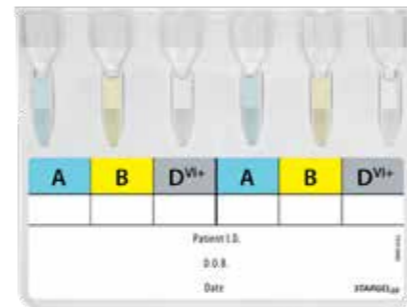
NTRL | NTRL | NTRL | NTRL | NTRL | NTRL



STARGEL10 ABO/D + Reverse (Donor)

For ABO Forward and Reverse Grouping in Donors.

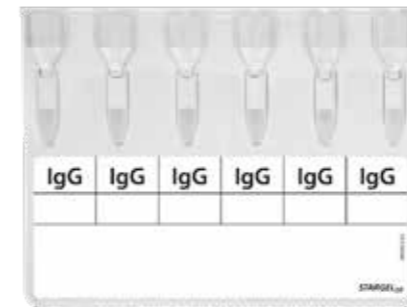
A | B | D^{VI+} | Ctl. | A1 cell | B cell



STARGEL10 Group Check (Donor)

For ABO and D Group Check on Donors (Anti-D detects D^{VI}).

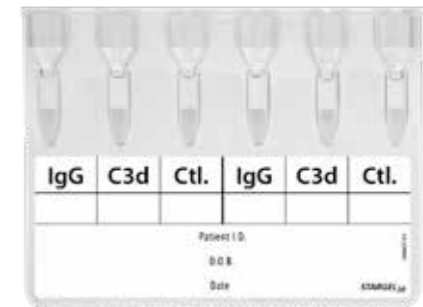
A | B | D^{VI+} | A | B | D^{VI+}



STARGEL10 Anti-IgG

For indirect antiglobulin testing.

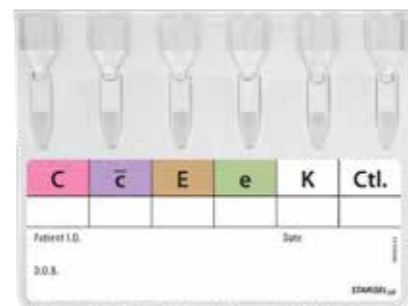
IgG | IgG | IgG | IgG | IgG | IgG



STARGEL10 D.A.T.

For direct antiglobulin testing.

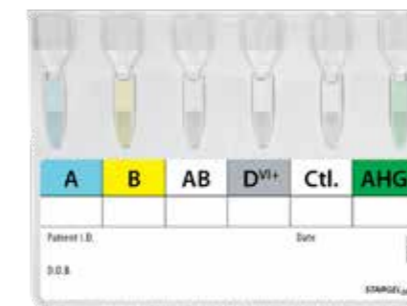
IgG | C3d | Ctl. | IgG | C3d | Ctl.



STARGEL10 Rh/Kell

For the determination of Rh Phenotypes and Kell.

C | c̄ | E | ē | K | Ctl.

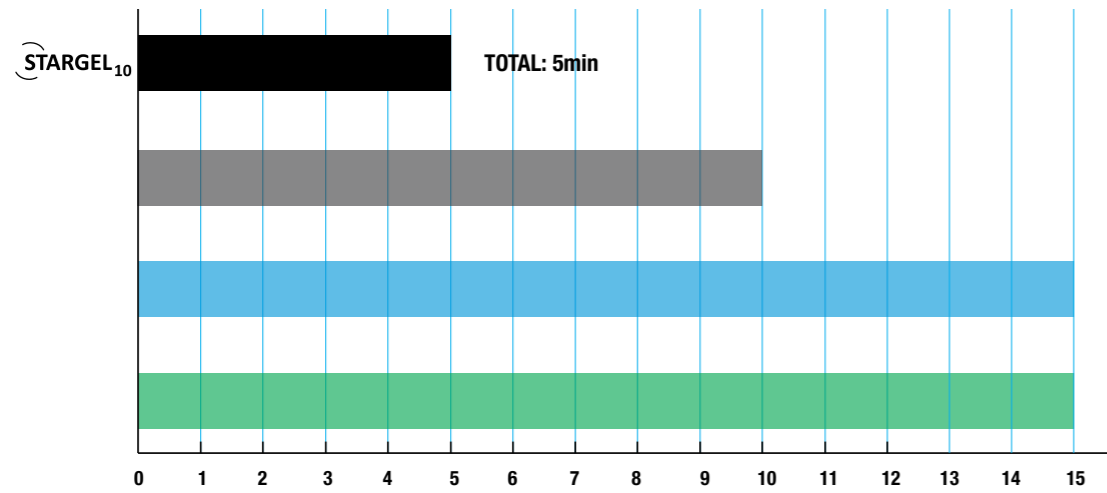


STARGEL10 Newborn

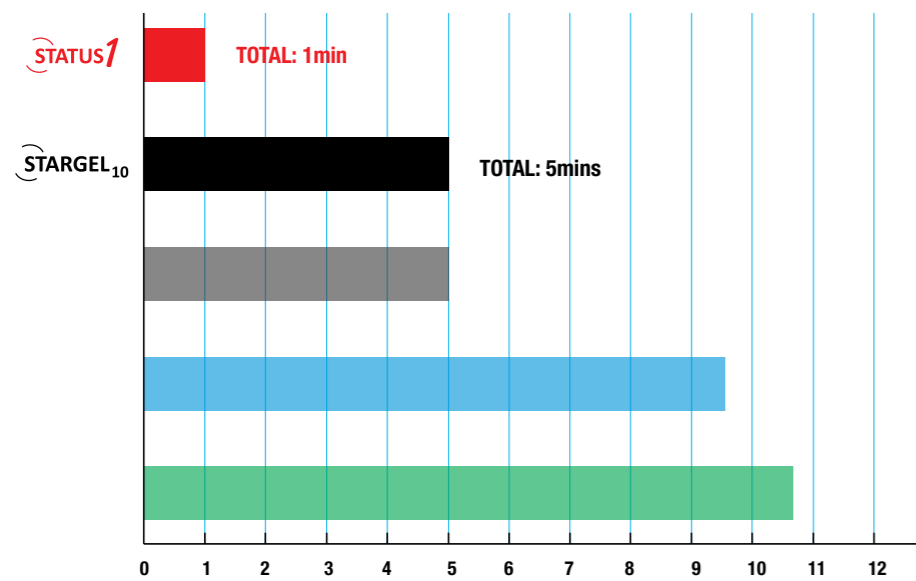
For the determination of Neonatal Grouping.

A | B | AB | D^{VI+} | Ctl. | AHG

Approximate incubation time (minutes)



Approximate centrifugation time (minutes)



Weight/Dimensions:

STARGEL₁₀TM Centrifuge:
 Net Weight: 10.4 Kg, Length: 45cm, Width: 50cm, Height: 17cm
 Switching Power Supply: Input 100-240V AC 3-1A, 50-60Hz, Output 28VDC 5.89, 165W MAX
 Service: Annual

STARGEL₁₀TM Incubator:
 Net Weight: 1 Kg, Length: 16cm, Width: 26cm, Height: 7cm
 Power Supply: 28VDC drawn from STARGEL₁₀TM Centrifuge expansion port
 Service: Annual

STARGEL₁₀TM SATELLITE:
 Net Weight: 1.9 Kg, Length: 36cm, Width: 29cm, Height: 24cm
 Power Supply: Input 100-240V AC 3-1A, 50-60Hz
 Service: Annual

STARGEL₁₀* Includes:

Part Number	Description	Pack
GT2013	STARGEL ₁₀ Centrifuge	1
GT2014	STARGEL ₁₀ Incubator	1
GT2015	Satellite Reader - STARGEL ₁₀	1
MC9015	Workstation	1
MC9013	Pipette MP-1	1
TT1005	(Optional extra) STATUS1 Centrifuge	1
Cards Available:		
GT2002-10	STARGEL ₁₀ ABO/D + Reverse (Patient)	1x10 cards
GT2002-100	STARGEL ₁₀ ABO/D + Reverse (Patient)	1x100 cards
GT2003-10	STARGEL ₁₀ ABO/D + Reverse (Donor)	1x10 cards
GT2003-100	STARGEL ₁₀ ABO/D + Reverse (Donor)	1x100 cards
GT2004-10	STARGEL ₁₀ Group Check (Patient)	1x10 cards
GT2004-100	STARGEL ₁₀ Group Check (Patient)	1x100 cards
GT2005-10	STARGEL ₁₀ Group Check (Donor)	1x10 cards
GT2005-100	STARGEL ₁₀ Group Check (Donor)	1x100 cards
GT2006-10	STARGEL ₁₀ Rh/Kell	1x10 cards
GT2006-100	STARGEL ₁₀ Rh/Kell	1x100 cards
GT2007-10	STARGEL ₁₀ Newborn	1x10 cards
GT2007-100	STARGEL ₁₀ Newborn	1x100 cards
GT2010-10	STARGEL ₁₀ Neutral	1x10 cards
GT2010-100	STARGEL ₁₀ Neutral	1x100 cards
GT2000-10	STARGEL ₁₀ AHG	1x10 cards
GT2000-100	STARGEL ₁₀ AHG	1x100 cards
GT2001-10	STARGEL ₁₀ Anti-IgG	1x10 cards
GT2001-100	STARGEL ₁₀ Anti-IgG	1x100 cards
GT2008-10	STARGEL ₁₀ DAT	1x10 cards
GT2008-100	STARGEL ₁₀ DAT	1x100 cards
Consumables:		
GT2011	STARGEL ₁₀ Star Solution Buffer	1x 500mL
MC9014	1mL Dispenser	1
Cells:		
RC5001	STARGEL ₁₀ Reverse A1 + B Cells	2x (1x2mL)
RC5021	STARGEL ₁₀ Reverse A1, A2, B, O Cells	4x (1x2mL)
RC5002	STARGEL ₁₀ 3 Cell Screen	3x (1x2mL)
RC5003	STARGEL ₁₀ 2 Cell Screen	2x (1x2mL)
RC5004	STARGEL ₁₀ Panel	11x (1x2mL)

*CE Marked.
 Talk to your local distributor for availability in your country.

WHEN **EVERY** ANSWER COUNTS...

STARGEL™₁₀