

TP 300

VACUUM TISSUE PROCESSOR

TP 300



Simply efficient

Fully enclosed, "state of the art" featured, safe and highly reliable, the Intelsint ETP is the right answer for the day-by-day tissue processing needs of every Histology laboratory.

With a processing capacity of 300 specimens, three paraffin containers and an easy to operate HMI (Human Machine Interface) it sets itself at the top of the category.

Designed with in mind concepts of specimens safety and operator ergonomics, the TP-300 is capable to perform also in not favorable environments.

Its fully automated RFD (Remote Fill and Drain) device allows the user a safe, clean and easy reagents renewal.



Simple and affordable service and maintenance is one of its key features.

The TP-300 Sample Processing Chamber

Completely made in high quality Stainless Steel.

Safe and easy to operate lid lock mechanism.

Special, easy to clean, surface treatment.

Gas piston to keep the lid open.

Lid open/close sensor.





Main Menu screen

The most used processing programs and service routines are shown in the Main Menu.

The most important operational parameters are always shown for "at a glance" instrument check.

Service routines like the Reagent Management System and the Wax Purification Cycle assist the user on keeping the reagents at the best possible level of cleaning and quality.

The Service routines assist users and service technicians for an easy and efficient instrument check, setup and maintenance.

Processing screen

Every processing parameter is shown during the entire process.

During the process information like: program name, end time, step under execution, remaining time, bottle filled into the SPC, are shown or highlighted.

Processes can be suspended or aborted in any moment. In case of power failure, when the power is back, the unit restarts the process from where it was interrupted.

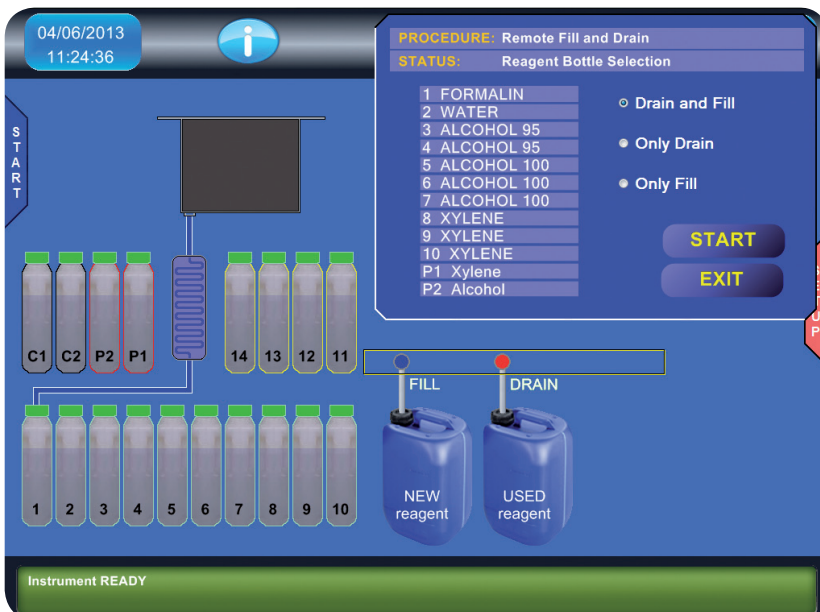
With the optional UPS the units continues to work for 30 minutes, then it shuts down automatically with the samples safely recovered.



Remote Fill & Drain

This unique and useful function permits to empty and refill one of the reagent bottles without removing it from its slot.

The function is completely automated, so it allows the user to walk away during the execution.



TP 300 - Features

- HMI software: user friendly, simple and clear
- Available software languages: Chinese, English, German, Italian, Spanish, French, Polish, Czech, Portuguese
- Reagent Management System: for reagents, waxes, filters
- Wax Cleaning Cycle: efficient on site system
- Reagent Agitation: user selectable
- Remote Fill/Drain automatic for reagents and purge agents
- Data backup on USB port
- User interface: LCD 15" color monitor with Touch Screen
- Process Programs: 18
- Delay: up to 14 days
- Reverse processing special program
- Process End Time mgmt: for every program, with auto-store
- Purge programs: 1 factory optimized, 3 custom
- Charcoal filters: 2, easy substitution and safe handling
- Anti-blackout and power failure device
- Remote alarm socket
- Sample Processing Chamber fume aspiration
- Easy maintenance and service
- Xylene free



TP 300 - Technical Specification

| | |
|------------------------------------|---|
| Rating | 100/240V - 50/60Hz |
| Max power | 1000 W |
| Weight | 154 Kg (empty) |
| Dimensions in mm | H 1300, W 720, D 600 |
| Running ambient temperature | +10° / +35°C |
| IEC1010 classification | Protective Class 1 |
| Max elevation | 2500 mls |
| Temperatures control precision | +/- 1°C |
| Paraffin waxes | 4+1 reserve - volume 2.5 / 3.2 l |
| Wax Melting time | 8 hours |
| Wax working temperature range | +55° / +65°C |
| Sample Processing Chamber capacity | 300 STD cassettes |
| Reagents working temperature range | ambient / 60°C |
| Sample Processing Chamber | completely stainless steel made |
| Sample baskets | 2x150 STD cassettes each with carrier |
| Reagents tanks | 10 - volume 2.5 / 3.2 l with quick connectors |
| Purge agents tanks | 2 - volume 2.5 / 3.2 l with quick connectors |
| Approvals | CE/IVD/UL |

Xylene free
all INTELSINT
tissue processors
can efficiently
work with xylene
substitutes



**Factory pre-filled
reagents and wax bottles**
(Ask your local dealer for
availability in your country)

Optionals

- Printer: Any Windows compatible printer
- UPS: 60' uninterruptable power source
- Large specimens basket
- GSM Remote Alarm
- Fume duct to connect the instrument to the lab fume duct